

ALLDAY
& MILLER



Caprea Close, Hayes, UB4 9PD
£475,000

2 2 1 C



Caprea Close, Hayes, UB4 9PD

£475,000

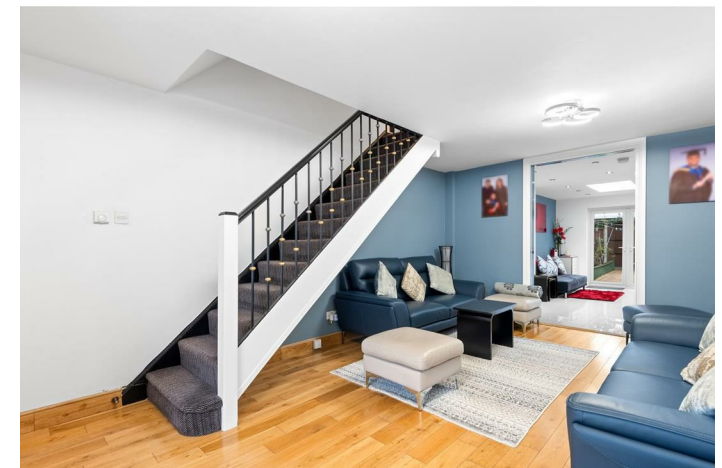
- Two Double Bedroom Semi-Detached Home
- Extended To The Rear & Side
- Driveway With Space For Up to Three Cars
- Close To Commended Schools And Universities
- Within Close Proximity To Hayes Town Centre
- Situated In A Sought-After Residential Area
- Fully Fitted Kitchen
- Nearby Hayes & Harlington Train Station
- A Stones Throw Away From Amenities
- Private Rear Garden

Description

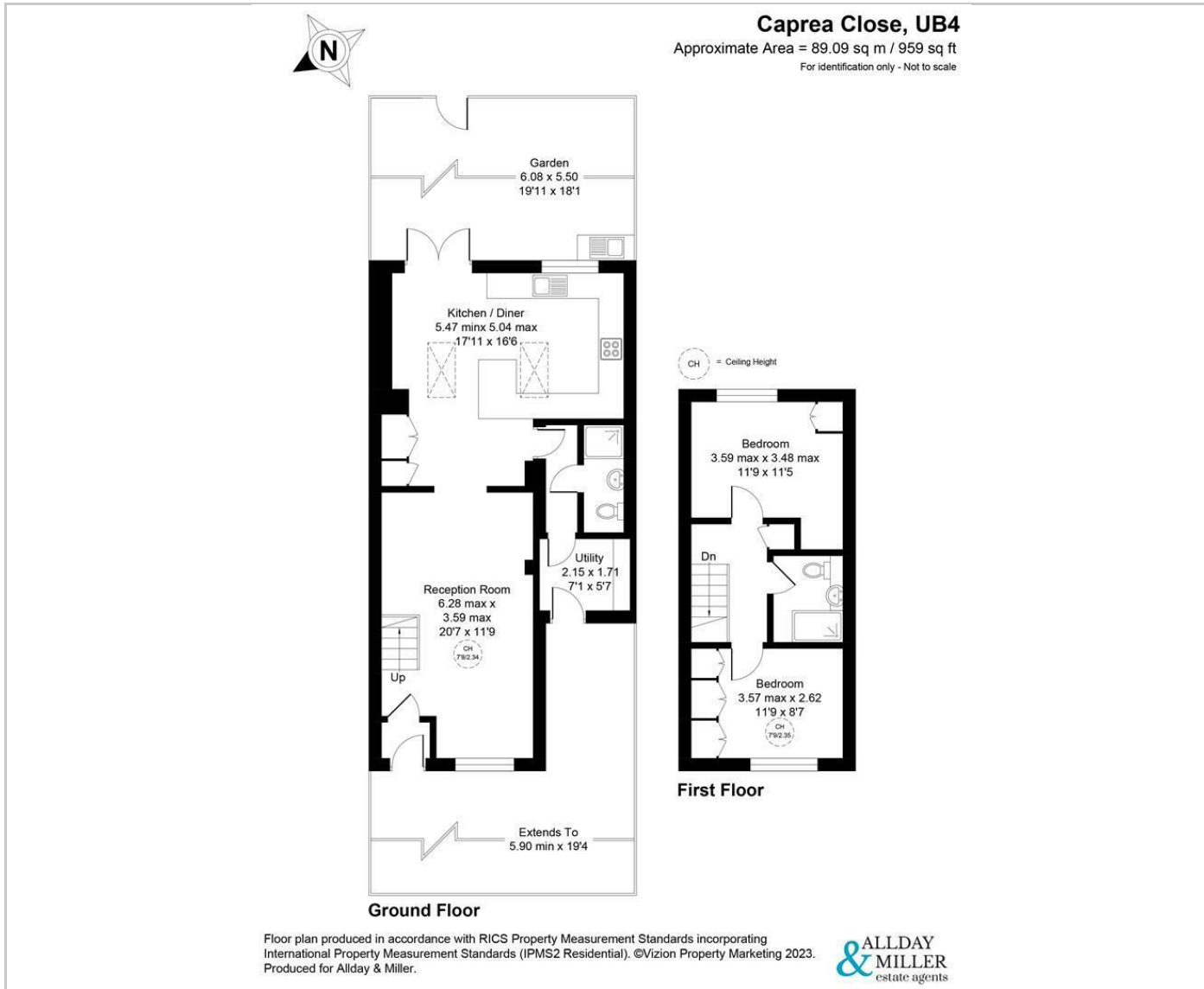
A two bedroom semi detached house situated on a quiet cul de sac in Yeading that has the potential to extend further to the side and loft (STPP). This location offers easy access to a variety of amenities including bus links, the M4/A40 road links (providing access to London and The Home Counties), Heathrow Airport and a number of local shops. The ground floor benefits from an entrance hall, 14ft living room, an extended 13ft kitchen diner, a downstairs W/c in the side extension and a car port. To the first floor there is a 13ft main bedroom, 12ft second bedroom and family bathroom. The front of the property benefits from an own drive to car port whilst the private rear garden is paved and stoned throughout creating low maintenance.

Situation

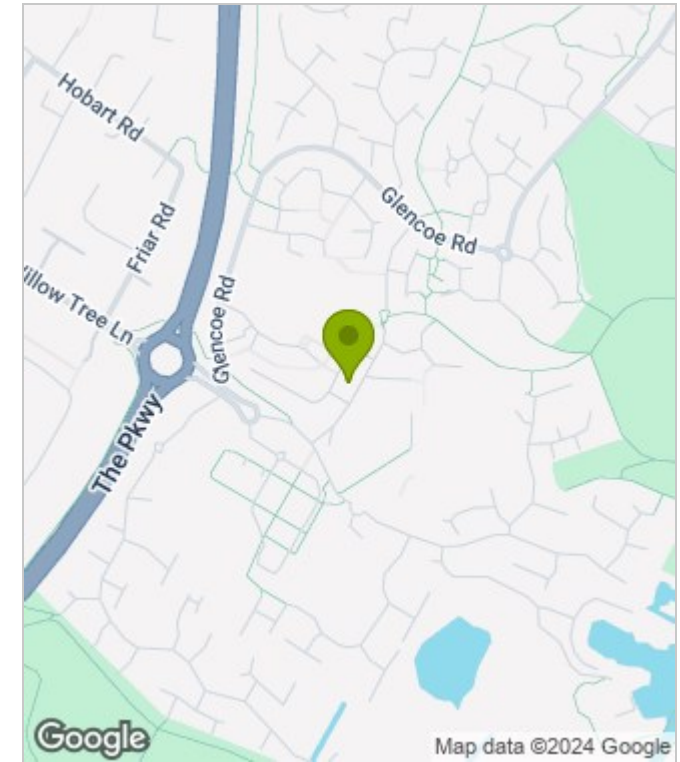
Caprea Close is a popular residential and quiet cul de sac situated in Yeading. This location offers easy access to a variety of amenities including bus links, the M4/A40 road links (providing access to London and The Home Counties), Heathrow Airport, a number of local shops and big superstores. The new Elizabeth Line runs from Hayes & Harlington Station, making the commute into central London a breeze.



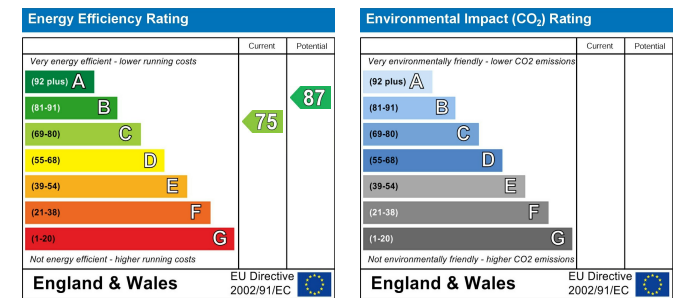
Floor Plans



Area Map



Energy Performance Graph



These particulars, whilst believed to be accurate are set out as a general outline only for guidance and do not constitute any part of an offer or contract. Intending purchasers should not rely on them as statements of representation of fact, but must satisfy themselves by inspection or otherwise as to their accuracy. No person in this firm's employment has the authority to make or give any representation or warranty in respect of the property.